

FUTURE, NOW

Collaborate! >

ANNUAL REPORT 2024/25

Innovation

Equal Opportunity

Bridge between the social and working world



WWW.FUNDACIONEXIT.ORG/EN



Letter from the Presidents and the General Manager

Collaborate! >

Consuelo Castilla and Hilario Albarracin

PRESIDENTS FUNDACIÓN EXIT



“25 years later, we continue to reaffirm our commitment to creating real opportunities for the most vulnerable young people, connecting the educational, social and business spheres to drive their future.”

The 2024/25 academic year has been marked by a particularly significant milestone for Fundación Exit: the celebration of our 25th anniversary. A moment that invites us to look back with perspective on the path we have travelled, to value what we have built collectively, and to renew our commitment to the challenges that drive us forward.

[Read more](#)

Nacho Sequeira

GENERAL MANAGER FUNDACIÓN EXIT



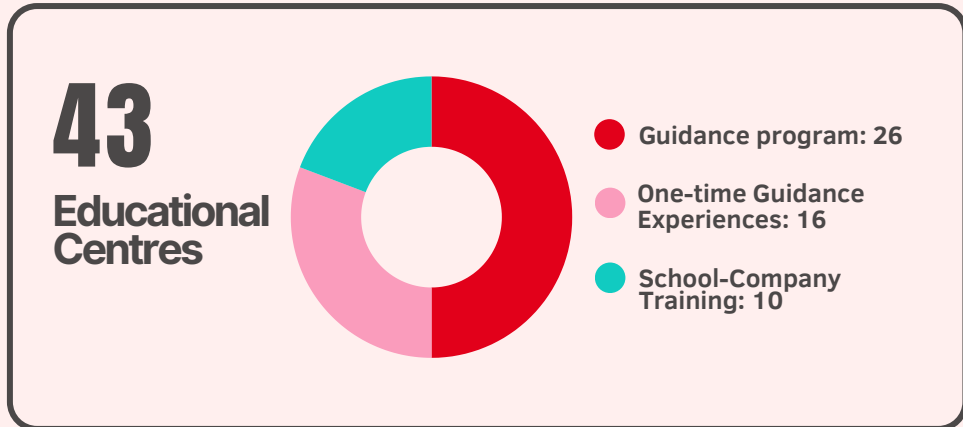
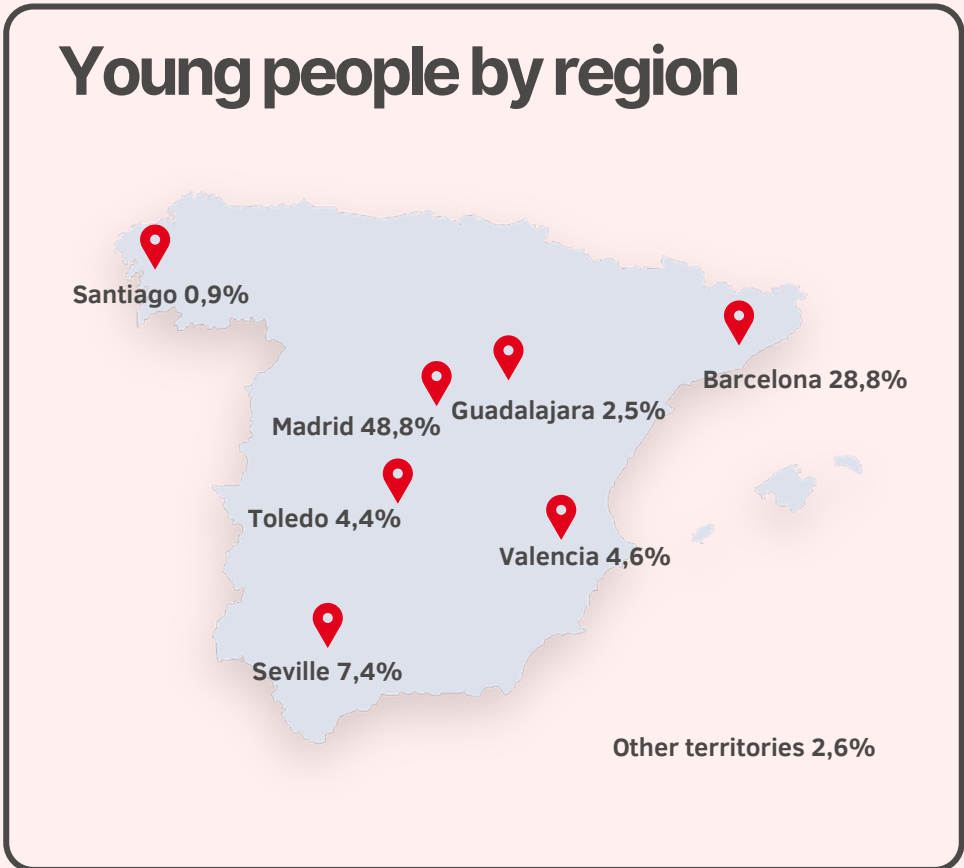
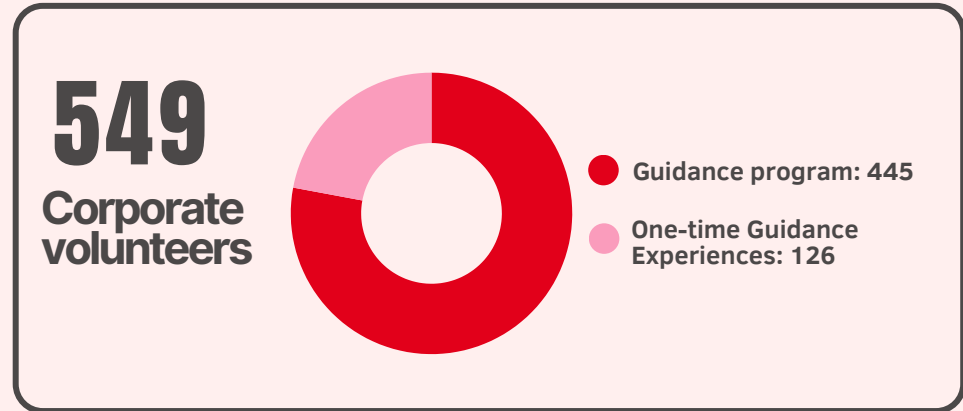
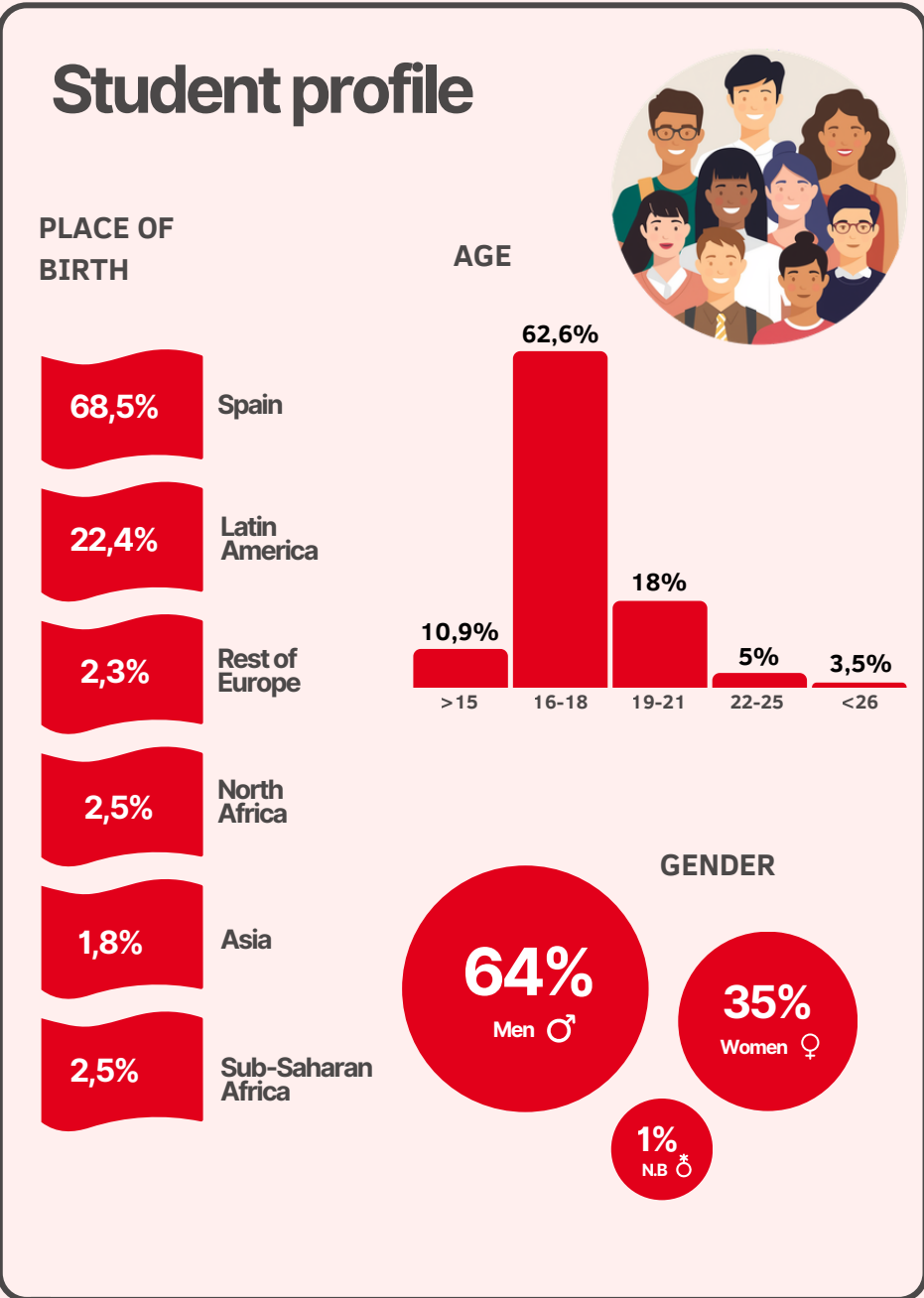
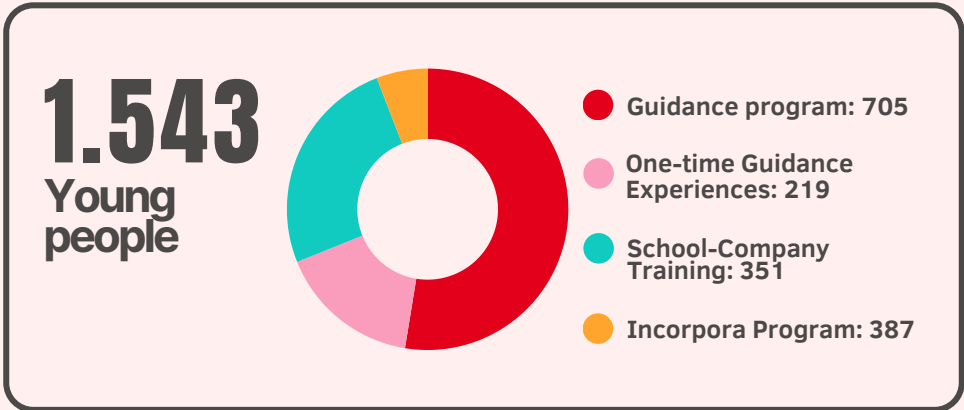
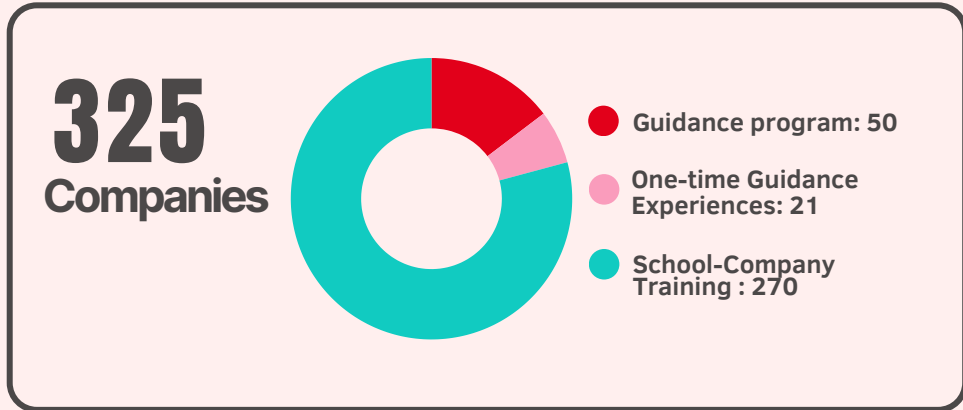
“We firmly believe that change is only possible when companies, educational institutions and organizations move forward together towards a common goal.”

During the 2024/25 academic year, at Fundación Exit we celebrated 25 years of commitment to young people. 25 years working so that thousands of young people in vulnerable situations can access what should never depend on their starting point: a real opportunity for the future.”

[Read more](#)

The foundation / Our work in numbers

Collaborate! >



During the 2024/25 academic year, a total of **549 volunteers** from **325 partner companies** took part in Fundación Exit's projects. We would like to highlight and thank their dedication and commitment to guiding young people and supporting their future.

Projects / Guidance and motivation

Collaborate! >



The 2024/25 academic year has been the first in which the **Guidance Program** has integrated the full set of activities and experiences in a comprehensive way, addressing the different dimensions of the guidance process: **from self-awareness and labour market exploration to career experimentation and decision-making.**

Guidance Program

During the academic year, a total of **705 young people** from three regions participated in the program: Madrid, Barcelona and Seville.

The Guidance Program is structured into 4 modules:

- **EXamine**, focused on self-awareness and the identification of skills and interests.
- **EXplore**, focused on exploring the labour market.
- **EXperience**, where we support the preparation of their work-based training placement in a company.
- **EXecute**, focused on decision-making.

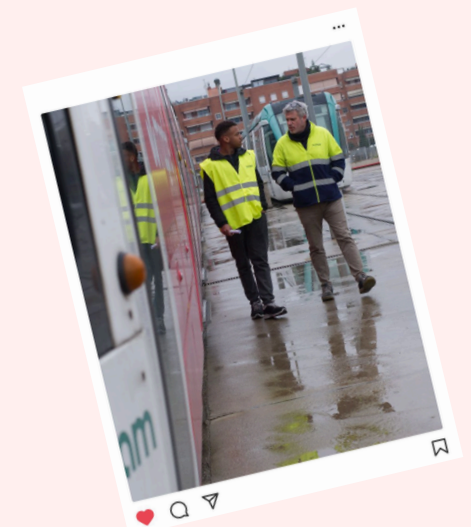
88,3% of students have continued studying after participating in the Guidance Program*

*Data obtained from satisfaction surveys conducted at the end of the program.

Labour market exploration experiences

In parallel to the Guidance Program, labour market exploration experiences have been developed:

- **Coach Project:** a corporate volunteering initiative in which each young person is assigned a company coach who supports them in exploring the world of work and encourages them to continue their studies.
- **Speed Dating Reverse:** short interviews with professionals that allow students to learn about real career paths, reflect on their interests, and develop skills for their life and career project.



Projects / School-Company Training

Collaborate! >

School-Company Training (SCT) I

The School-Company Program arises from the importance of ensuring that young people achieve at least a Mid-Level Vocational Training (VT) qualification in order to guarantee high-quality labour market insertion. Therefore, we work to bring students and educational institutions closer to the reality of professions and sectors, hand in hand with companies. In addition, we provide personalised support and work on skills identification and development.

86%

of the students have continued studying after participating in the School-Company Training Project I.*

*Data obtained from satisfaction surveys conducted at the end of the program.

School-Company Training (SCT) II

Through this project, young people complete their training in companies, developing both technical and transversal skills with the aim of obtaining their Intermediate Vocational Education qualification, which prepares them to enter the labour market and/or encourages and motivates them to continue their education.

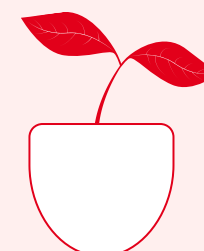
*During the 2024/25 academic year, **11 editions** of FEE II were held in **6 cities**.*

Total program data

351 young people

270 companies

10 educational institutions



Incorpora by Fundación "la Caixa"

Since its launch in 2006, we have participated every year in the employability programme Incorpora by Fundación "la Caixa" in Barcelona and Madrid. The activities of the Incorpora network cover the entire national territory and aim to promote the integration of people who face difficulties in accessing the labour market.

387 young people

197 job offers

154 job placements for young people actively seeking employment

*The Incorpora program by Fundación "la Caixa" is evaluated on a calendar year basis.



Partner companies

Collaborate! >



Throughout the year, collaboration between different stakeholders has been strengthened, with the participation of 325 companies and the commitment of 549 corporate volunteers. In addition, 43 educational centres have been involved, enabling a direct impact on 1,543 young people.

This joint effort helps to foster opportunities that support the development of young talent and their professional future.

325 committed companies

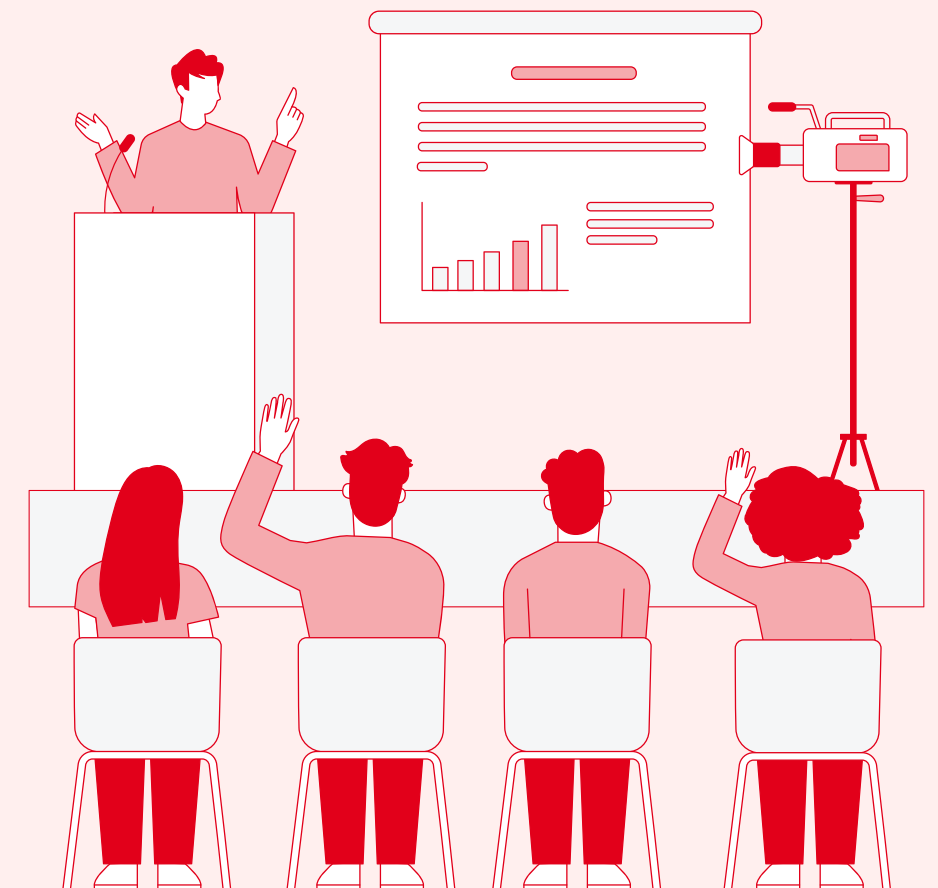
1.543 young people in the 2024-25 course

1 common objective
address early school dropout

Commitment and opportunities

The commitment of partner companies is a fundamental pillar of Fundación Exit's work. Their active involvement not only makes our programmes possible, but also adds value by **connecting the educational environment with the reality of the labour market.**

Thanks to their participation, young people gain access to role models, experiences and opportunities that broaden their horizons and strengthen their employability. Working with committed companies also enables us **to build more sustainable solutions aligned with market needs, moving forward together towards a society with more opportunities for everyone.**



Transparency / Accountability

Collaborate! >

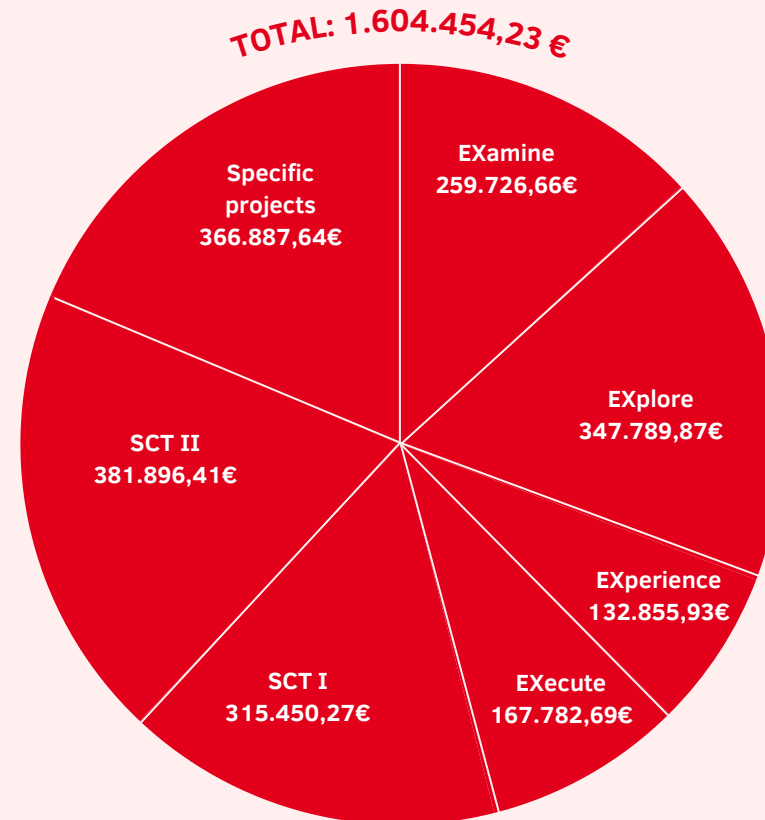
The result for the 2024/25 fiscal year was: **-4.067,93 €**

TOTAL INCOME **1.968.321,54 €**

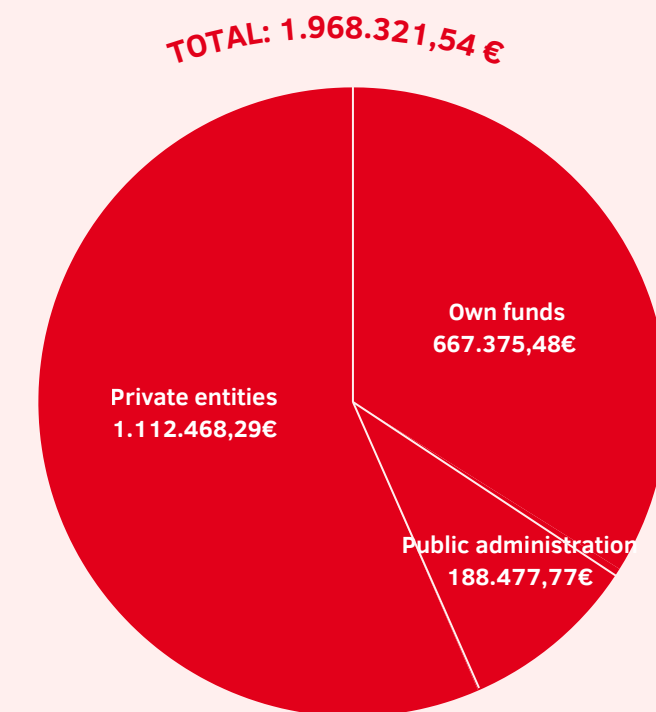
TOTAL EXPENSES **1.972.389,47 €**

PROJECT-RELATED EXPENSES **1.604.454,23 €**

Project Expense Breakdown:



How do we obtain our income?



Want to know more?

Download the audit report [here](#)



How do we allocate our funds?

MISSION

81,35%

1.604.454,23 €

ADMINISTRATION

9,60%

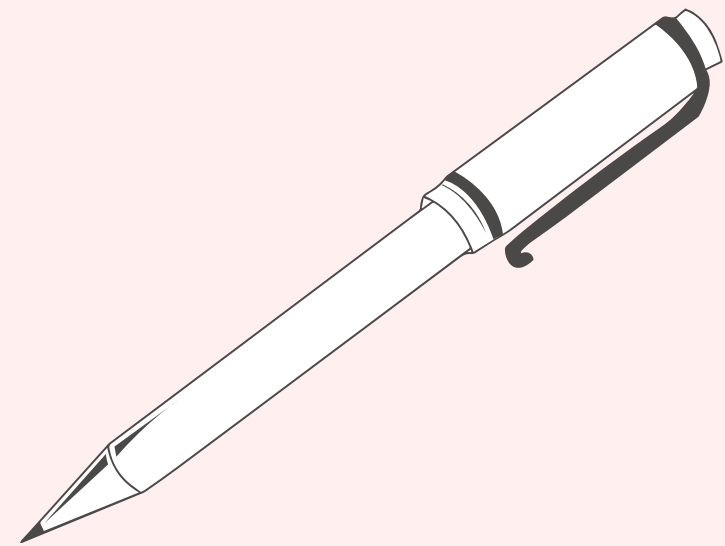
189.465,36 €

FUNDRAISING

9,05%

178.469,88 €

***No youth,
no future.***



fundacionexit.org/en